

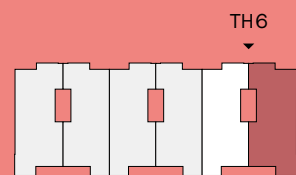
# LOTTA

GARTENHAUS  
/ GARDEN BUILDING

EXKLUSIVVERTRIEB / EXCLUSIVE SALES BY  
ACCORD ESTATES GMBH

WhatsApp  
0175-5085964

ALBRECHTSTRASSE 24



karlotta-berlin.de

## WE 65 / 136,58 m<sup>2</sup>

TH6, 2. und 3. OG, 3 Zimmer,  
Nutzgarten, Retentionsdach

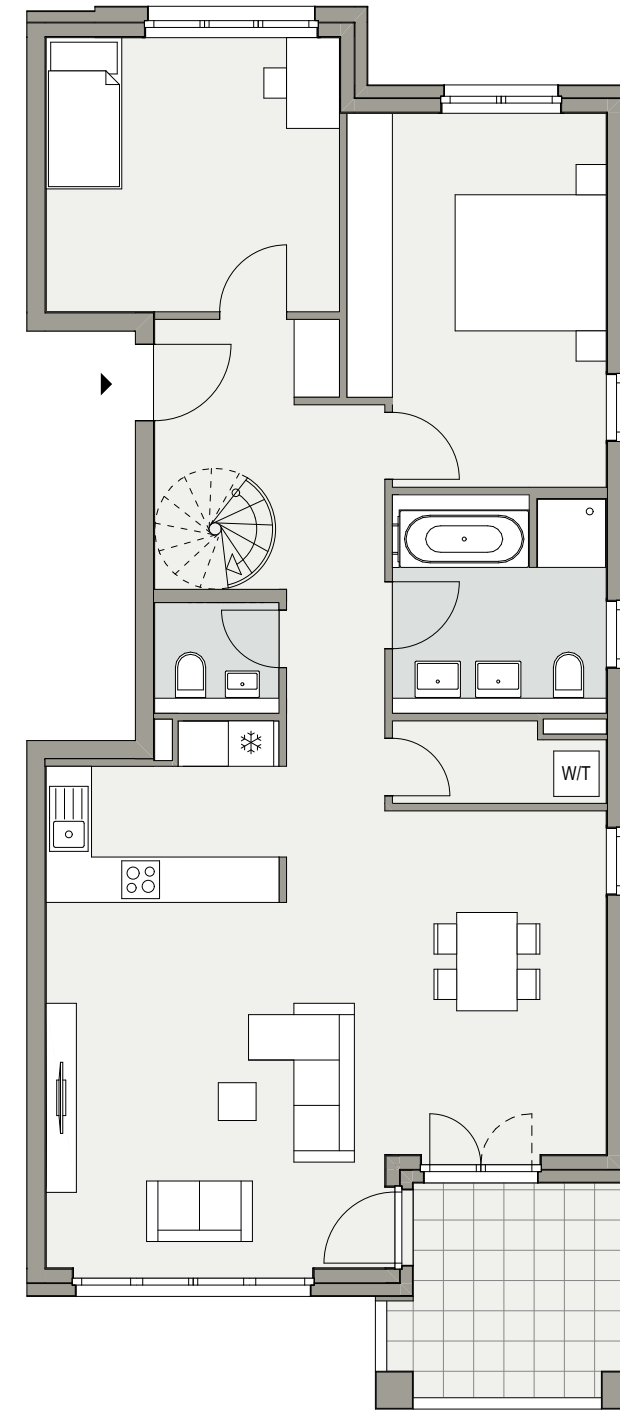
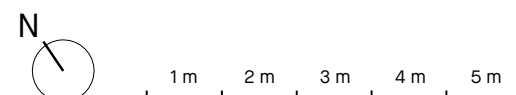
TH6, 2nd and 3rd floor, 3 rooms,  
kitchen garden, retention roof

|  | m <sup>2</sup> |       |
|--|----------------|-------|
| Wohnen, Essen, Kochen /<br>Living room, dining room, kitchen | 44,10          |       |
| Schlafen / Bedroom   | 16,20          |       |
| Zimmer / Room  | 14,10          |       |
| Diele / Hallway  | 12,10          |       |
| Bad / Bathroom   | 8,00           |       |
| WC / Toilet  | 2,50           |       |
| HWR / UR   | 2,70           |       |
| Dachzugang 3. OG / Roof access 3rd floor                     | 11,00          |       |
| Summe / Total  | 110,70         |       |
| Balkon / Balcony   | 8,30           | 4,15  |
| Nutzgarten 3. OG / Kitchen garden 3rd floor                  | 17,90          | 8,95  |
| Retentionsdach / Retention roof                              | 51,10          | 12,78 |
| Gesamtfläche / Total area                                    | 136,58         |       |

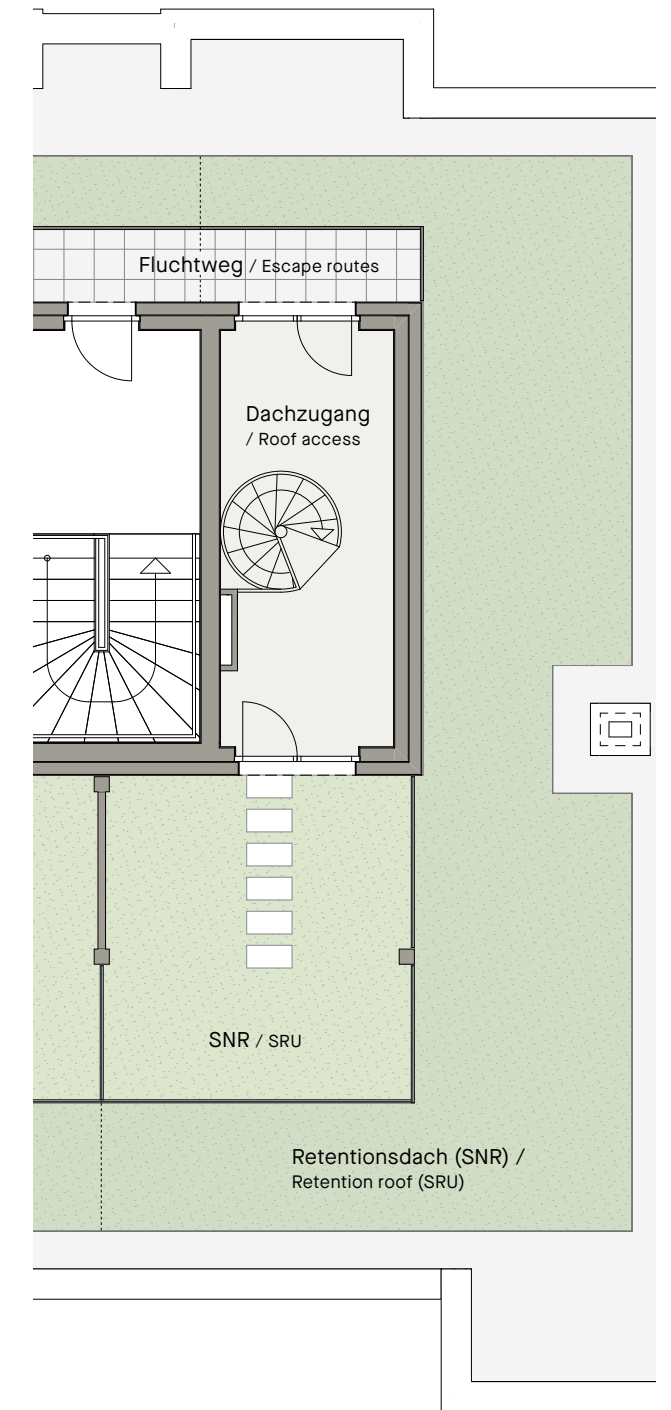
SNR = Sondernutzungsrecht Nutzgarten  
/ SRU = Special use right for the kitchen garden

Die angegebenen Flächen basieren auf Fertigmaßen.  
Balkone, Terrassen und Nutzgärten werden zu  
50% angerechnet. Das Retentionsdach der WE 65  
wird zu 25% angerechnet.

/ The indicated floor spaces are based on finished dimensions.  
Balconies, terraces and kitchen gardens are considered in  
the calculation at 50%. The retention roof of unit 65 is  
considered at 25%.



2. OG



3. OG

## KARLLOTTA

EIN PROJEKT DER / A PROJECT OF  
ZAUNER DEVELOPMENTS GMBH